



PRODUCT

Artdecors Lite with **metallic finish** are extremely thin stone veneers with a final coat of metal pigmented paint.

Artdecors Lite in **concrete look** are a combination of fiberglass and colored resin on the front.

STANDARD SIZES

Regular size: 1.220 x 610 mm
(metal finish & concrete veneers)

Large format: 2.400 x 1.200 mm
(metal finish)

Dimensional tolerance is ± 1,5 mm in length, width and at the right angles.

FIELDS OF USE

Walls, ceilings, furnace construction, furniture.

Note: Not suitable for wet areas or outside!

TOOLS

Any commercially available tool (DIY-tools) for sawing, drilling, milling, cutting, bending or pressing. For industrial processing we recommend using diamond blade tools due to strong wear on wood blades.

If masking tape is used, please make sure that not adhesive is left on the sheet. Please use tape with low adhesion and do not leave the tape on the surface for too long. Test any adjustments to the materials and tools beforehand in any inconspicuous place or a test sheet.

When processing only use sheets that could lay flat and are completely relaxed! Applying heat through a hot air gun or underfloor heating can increase flexibility of material.

LAMINATION ON WOOD, METALS, PLASTERBOARDS

Lamination with 1-Component-PU-Adhesive (Polyurethan).

Compensating additives: Backing paper 120 g/m² or 0,8 mm HPL.

Use an additional 7 mm rubber with a hardness of 50 Shore. Depending on the design of the press, the pressure must be carefully selected.

CLEANING

Use a lint-free cloth for cleaning.
Use normal commercial cleaners.

Important note: Please not that acid cleaners attack the surface and are not suitable!

ADHESIVES

We recommend using **Slate-Lite X-treme Bath+Exterior**. If you adhere in areas with temperatures from 90°C to 120°C (oven/fireplace) please use another adhesive like **ASK DS770**. Always use a B3 toothed shovel to adhere.

WEIGHT

approx. 1,8 – 3 kg/m²

THICKNESS

approx. 1,5 – 2,0 mm

DENSITY

~ 1,45 kg/m²

THERMAL EXPANSION

0,5 – 0,8 mm (up to 90°C)

TEMPERATURE RESISTANCE

up to 120°C

PROCESSING TEMPERATURE

10°C to 35°C are recommended.

SUBSTRATES

Wood, metal, glass, rigs, concrete.

Please note the instructions and datasheets of all used adhesives or plastics used for subfloor processing.

STORAGE

The storage of unsealed material must be dry, preferably frost-free and sun protected.

Protect against climatic influences.

Material should be stored flat in order to avoid deformation.

QUALITY ASSURANCE

For quality assurance, a german quality management is used. Starting in the purchase of the raw-material until the eventual shipment of the finished product, each square cm of the product is out trough a strict quality control. All products are inspected by severly quality inspectors and tested until the final release to be shipped.

SALES NETWORK

R&D GmbH has an almost worldwide distribution network. Simply send us your request and we will redirect them to their respective distributors.

www.slate-lite.com

SHIPPING / UNBOXING

All sheets will be sent to you in a flat shipping box or pallet. Please check all packaging carefully and make sure that you don't damage the material.

All transport lines can be used. Due to the low weight of material transport costs are quite low worldwide. For quick delivery even a parcel service can be used.

	Stock Europe Box Palett	Factory India
122 x 61	10 pcs. 175 pcs.	250 pcs. (wooden crate)
240 x 120	30 pcs.	180 pcs. (wooden crate)



ENVIRONMENTAL PROTECTION

Thanks to their lightness and thinness, our thin stone veneers are not only easy to work with and offer unique indoor and outdoor possibilities, but with *Slate-Lite* you also opt for an environmentally friendly stone decoration!

The emission rates on the transport routes are many times lower for *Slate-Lite* than for conventional stone slabs, which leads to a much more positive life cycle balance.

Most of our goods are shipped by sea to our central warehouse. With a pollutant quantity of approx. 15.1 grams of CO₂ emissions per kilometer (source: NABU), the following example calculation of one of our containers results: (Comparative calculation: Sea route India/Germany. granite slab vs. *Slate-Lite*)

	Transport route	Material (m ²)	Charge (kg)
Slate-Lite	Seacontainer 40	10.637 m ²	26.500 kg
Granit slab (2 cm)	Container 40'	441 m ²	26.500 kg
	Distance (km)	CO ₂ emission (g)	CO ₂ emission / m ²
Slate-Lite	7.500 km	3.001.125,00	282,12 g
Granit slab (2 cm)	7.500 km	3.001.125,00	6.806,27 g

A sheet of *Slate-Lite* produces about 95% less CO₂ than a conventional thick stone slab during transport!

In addition, the manufacturing process we have developed also conserves a lot of natural resources: Depending on the decor, we extract 200 – 400 sheets of *Slate-Lite* from the stone material of a single conventional stone slab of 2 cm!

Of course, we are also increasingly relying on recyclable solutions for our packaging, so that we have already been able to reduce the proportion of plastic waste many times over in recent years. And of course we will continue to work on this path in the future!

INFORMATION: MATERIAL CHECK AFTER DELIVERY

Slate-Lite is made of layered rock. Color differences in the individual plates and quartz veins that run through the stone, natural cracks or slight chipping may occur.

This is not a complaint reason, but is a feature of the natural stone surface!

Should you nevertheless discover a defect or too great changes in color and structure of the goods sent, we ask you to inform us immediately within 14 days.

Goods that are processed despite obvious defects are excluded from regression claims!

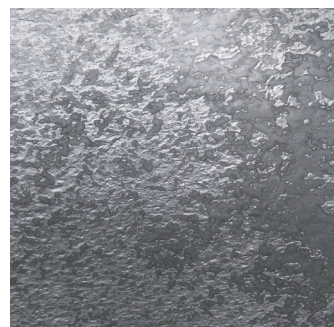
AVAILABLE DECORS



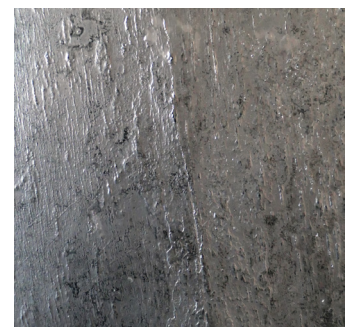
- Metal Cooper -



- Metal Gold -



- Metal Silver -



- Metal Antique Silver -



- Concrete Dark -



- Concrete Bright -



unique surfaces.
lightweight, thin and bendable.